



The Gantt of

Our expansion module for HxGN EAM, which enables rapid scheduling of maintenance activities and easier organisation of personnel, thanks to its intuitive graphical interface.

WHY CHOOSE Active GANTT

- ✓ Awareness of the state of the System through a **global view on planning**
- ✓ Possibility of **detailed** views for even more **precise** scheduling
- ✓ **Increased** work **fluidity**: everything can be planned from the same screen
- ✓ **Education** in work structuring through the creation of **intelligent dataspy**

CONTACT US:



Netsurf S.r.l.



C.so Vercelli 444, Ivrea, 10015, TO, Italy



+39 0125 252031



info@netsurf.it



www.netsurf.it

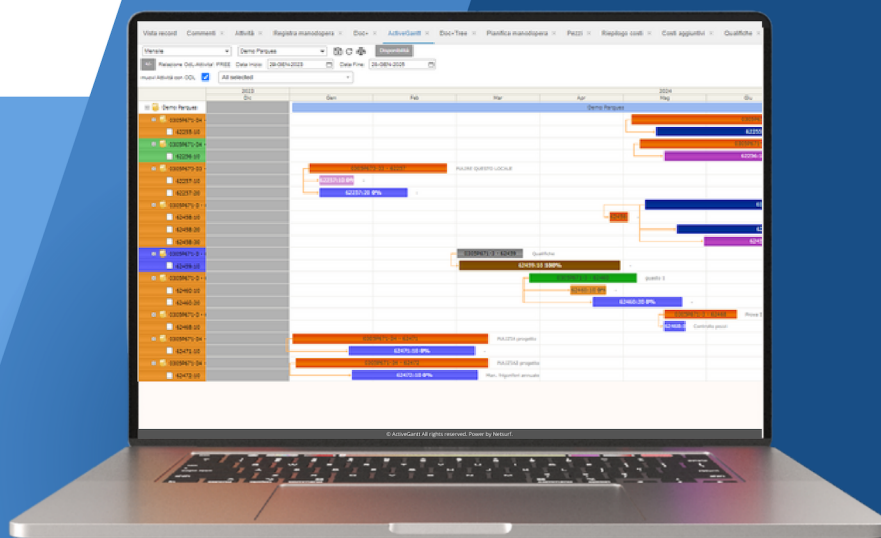


netsurf_ivrea



Netsurf

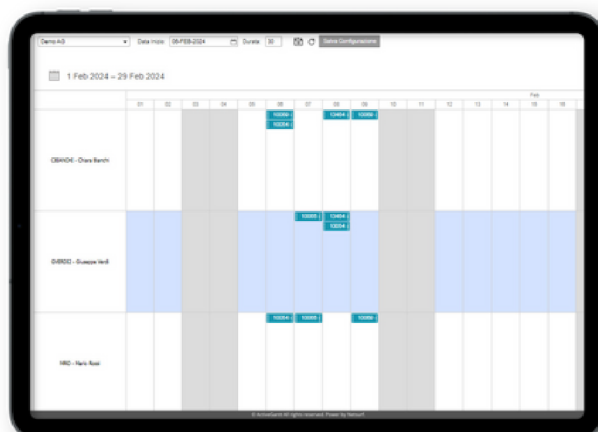









Organization and integration

The core of Active GANTT lies in the HxGN EAM screen **tab** of **Events (WO)** and **Employees**.

The first allows you to have at a glance the maintenance activities that must be carried out and which, thanks to this tool, can be consistently scheduled **in the blink of an eye**. The second is a natural complement to the previous point, allowing the managing of the **workload** of the employee, who will be assigned tasks accordingly.



CONTACT US:

 Netsurf S.r.l.
 Corso Vercelli 444, Ivrea,
 10015, TO, Italy
 +39 0125 252031
 info@netsurf.it
 www.netsurf.it
 netsurf_ivrea
 Netsurf